



CTA Approved Products



TRAILER PARTS CATALOG

Version #1-23



www.sirtrailerparts.com



Leading the way with more than 27 years of experience in manufacturing automotive parts and 55 years in critical manufacturing.

SIR Australia Pty Ltd manufactures and wholesales a huge range of trailer parts used in Box trailers, Boat trailers and Caravan chassis across Australia and many other parts of the world. Our product range includes parts made out of Casting, Presses, CNC machines, Fabrication from sheet metal, round rods, square rods, RHS, SHS and iron casting etc. Some of the products we manufacture are Axles, Hubs, Discs, Drums, Fish plate, Coupling plate, Fabrication items, Calliper, Jockey wheel, Couplings and many more. All the above is manufactured inhouse by highly skilled labour.

Lastly, we excel in developing custom made products as per customer requirements to suit their specific needs. We have our inhouse Design and R&D Team that can deliver a product from prototype to final in better-than-expected timelines. Our manufacturing and wholesale concerns follow strict ISO 9001:2015 QMS guidelines to maintain the quality of the product and professionalism of our business model.

We have Casting to Final Product all under 1 roof. Raw Material is procured, tested and converted to its finest finished form and supplied to our customers worldwide. Our team of engineer's liaison with the manufacturing and technical team with all the necessary inputs and keep them informed with the technological advances. We stay updated with the latest 3D modelling (using Solid works) and testing software's (like: Ansys). All products are tested for strength on computer software through FEA testings so that we can maintain the required strength and quality of our products. Moreover, before launching the products we get them tested through various approved laboratories to make sure they are compliant to industrial standards (like ADR) and deliver excellent performance on roads.

Manufacturing Operations

Our 1,500,000 square feet factory in Northern India encompasses every aspect of Production, including cupola and electric induction furnaces, a state-of-the art Machining and processing unit, and a sophisticated testing facility Our production facility is equipped with a Computerized Numeric Control Machines (CNC), Vertical Machining Centers (VMC), Horizontal Machining Centers (HMC), Computerized Lathes, Milling Machines, and Hydraulic Presses. We are equipped to handle production up to 2000 Tons per month.

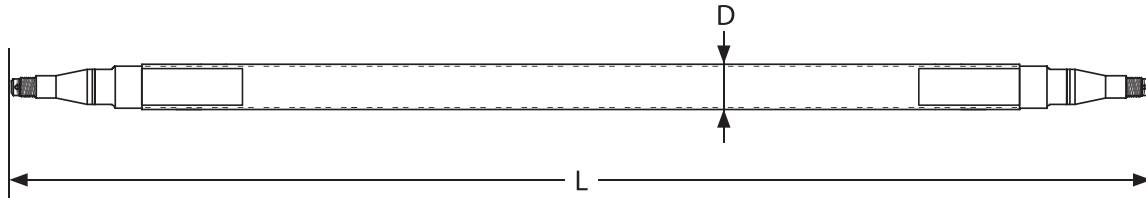
Certification



Content

Hollow Axle	4
Axle/Stub axle Profile Selection	5
Stub Axles	6
Straight Solid Axles	7-12
Drop Axles	13
Braked Axles	14
Braked Drop Axles	15
Axle Accessories	16
Brakes	17
Brakes Accessories	18-20
Hubs and Drums	21-23
Hubs Accessories	24
Rocker Roller Sets	25
Rocker Roller Sets Support	26
Leaf Springs	27
Eye & Slipper Springs Support	28
Leaf Spring Accessories	29-30
Coupling	31
Coupling Accessories	32-33
Hardware	34-38
Electrical	39-40
Trailer Winch	41
Wheels & Tyres	42-44
Mudguards	45
Drop Down Legs	46
Jockey Stands	47
Jockey Wheels	48
Trailer Drawbar	49

HOLLOW AXLE



* D - Represents the tube size
L - Represents the Length of the axle

Hollow Axles provide a better alternative to solid beam axles as it offers a 40% weight reduction without compromising on the capacity of the axles. These are made from Galvanised RHS of high quality C450 grade. These axles can be constructed of any size as per the customer requirement as they are manufactured in-house in our state of the art manufacturing facility.



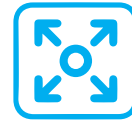
MADE IN HOUSE
using **TOP Quality**
Australian Steel



Grade C450
HIGH STRENGTH
Material



LIGHTWEIGHT
Up to 40% Lighter

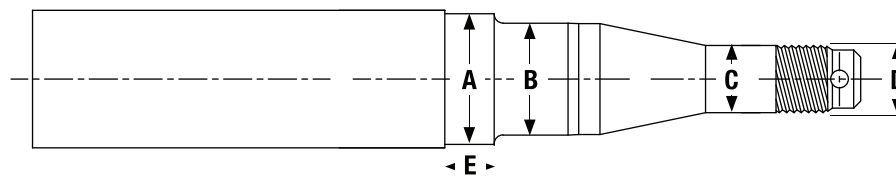
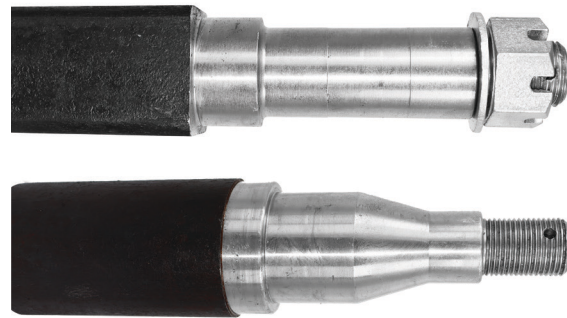


NO REDUCTION
in carrying capacity

AXLE RANGE

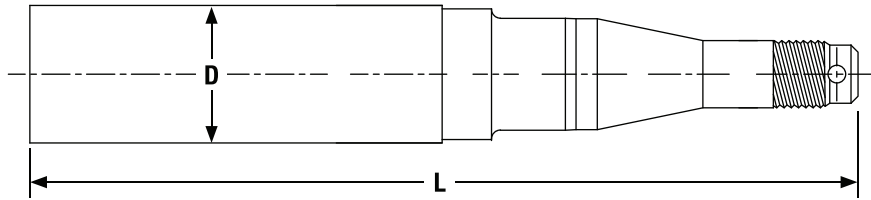
Capacity (ATM)	Bearings	Steel Grade	Tube Dimensions (mm)	Axle Type
1400 kg	S/Line	C450	50x50x6	Straight
1600 kg	Parallel	C450	50x50x6	Straight
2000 kg	2T	C450	65x65x4	Straight

AXLE / STUB AXLE PROFILE SELECTION



Bearing Type	Manufacturer's Bearing Number (Inner) (B)	Manufacturer's Bearing Number (Outer) (C)	(D) Thread Size & Type (inches)	(A) "Nominal" Seal Journal Diameter (mm)	(E) "Nominal" Seal Journal Length (mm)
LM	LM 67048/10	LM 11949/10	¾" UNF - 16 TPI	37.5	14mm
LM Marine	LM 67048/10	LM 11949/10	¾" UNF - 16 TPI	37.5	14mm
SL	LM 68149/10	LM 12749/10	¾" UNF - 16 TPI	43.9	27mm
SL Marine	LM 68149/10	LM 12749/10	¾" UNF - 16 TPI	44.9	14mm
Parallel	LM 68149/10	LM 68149/10	1" UNS - 14 TPI	43.9	27mm
2 T	25580	15123	1" UNS - 14 TPI	48.6	-

STUB AXLES



Stub Axle Stock Lines

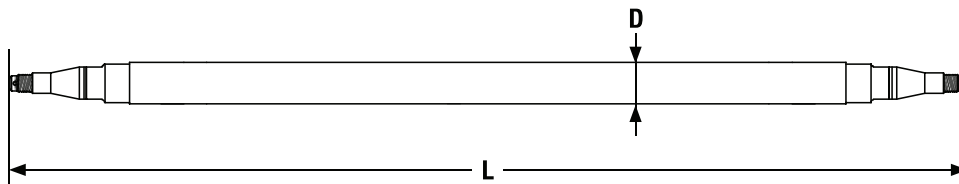
Product Code	Style	Round or Square (D)	Size in mm (L)	Size in Inch	Type
S017736	Stub Axle	39 Round	200mm	8"	LM
S017737	Stub Axle	39 Round	250mm	10"	LM
S017740	Stub Axle	40 Square	200mm	8"	LM
S017741	Stub Axle	40 Square	250mm	10"	LM
S017742	Stub Axle	45 Square	200mm	8"	SL
S017743	Stub Axle	45 Square	250mm	10"	SL
S017744	Stub Axle	45 Square	300mm	12"	SL
S017746	Stub Axle	50 Square	300mm	12"	Parallel
S017747	Stub Axle	50 Square	300mm	12"	2T
S017753	Stub Axle	65 Round	250mm	10"	2T



STRAIGHT SOLID AXLES



It is a solid beam axle made from 1045 grade drawn steel bar. This style of axle is suitable for any kind of light trailers, however, predominantly used in box and boat trailers.



Stub Axle Stock Lines

Axle Size (D)	Axle Beam Profile	Axle Carrying Capacity (kg)	Machining Profile	Length (L)
39mm	Round	750 kg	LM	Axles length to suit standard body width are carried in stock.
40mm	Square	1000 kg	LM	
45mm	Round	1200 kg	SL	
45mm	Square	1450 kg	SL	
50mm	Square	1600 kg	Parallel	
50mm	Square	2000 kg	2.0 tonne	
63mm	Square	3000 kg	2.0 tonne	
65mm	Round	2500 kg	2.0 tonne	

* Brake mounting flanges can be fitted on the axles.





Round Axle 39mm

Product Code	Round (D)	Size in mm (L)	Size in Inch
S001015	39 Round	1320mm	52"
5001019	39 Round	1625mm	64"
5001020	39 Round	1650mm	65"
5001021	39 Round	1675mm	66"
5001022	39 Round	1700mm	67"
5001023	39 Round	1730mm	68"
S001031	39 Round	1955mm	77"
S001033	39 Round	2005mm	79"



Round Galvanised Axle 39mm

Product Code	Round (D)	Size in mm (L)	Size in Inch	Type
S001172	39 Round	1625mm	64"	Galv
S001177	39 Round	1730mm	68"	Galv
S001179	39 Round	1855mm	73"	Galv



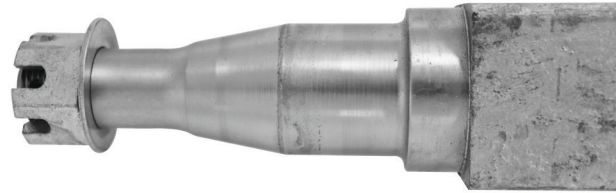
Square Galvanised Axle 40mm

Product Code	Square (D)	Size in mm (L)	Size in Inch	Type
S001192	40 Square	1920mm	75.5"	Galv
S001195	40 Square	2030mm	80"	Galv



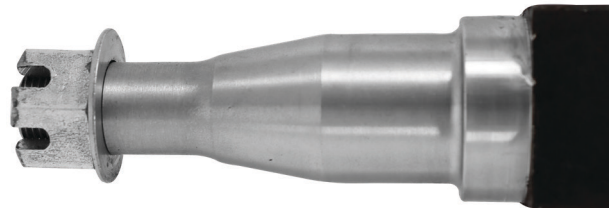
Square Axle 40mm

Product Code	Square (D)	Size in mm (L)	Size in Inch
S001034	40 Square	1525mm	60"
S001035	40 Square	1600mm	63"
S001036	40 Square	1625mm	64"
S001037	40 Square	1650mm	65"
S001038	40 Square	1675mm	66"
S001039	40 Square	1700mm	67"
S001040	40 Square	1730mm	68"
S001041	40 Square	1750mm	69"
S001042	40 Square	1775mm	70"
S001043	40 Square	1805mm	71"
S001044	40 Square	1830mm	72"
S001045	40 Square	1855mm	73"
S001046	40 Square	1905mm	75"
S001047	40 Square	1930mm	76"
S001048	40 Square	1955mm	77"
S001049	40 Square	1980mm	78"
S001050	40 Square	2005mm	79"
S001051	40 Square	2030mm	80"
S001052	40 Square	2060mm	81"
S001053	40 Square	2080mm	82"
S001054	40 Square	2110mm	83"
S001055	40 Square	2135mm	84"
S001056	40 Square	2155mm	85"
S001057	40 Square	2210mm	87"
S001058	40 Square	2260mm	89"
S001059	40 Square	2285mm	90"
S001060	40 Square	2310mm	91"
S001061	40 Square	2340mm	92"
S001062	40 Square	2360mm	93"
S001063	40 Square	2390mm	94"
S001064	40 Square	2415mm	95"
S001065	40 Square	2435mm	96"
S001066	40 Square	2465mm	97"



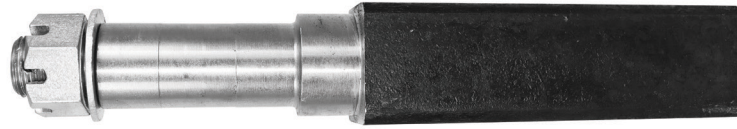
Square Galvanised Axle 45mm

Product Code	Square (D)	Size in mm (L)	Size in Inch	Type
S001210	45 Square	1920mm	75.5"	Galv
S001213	45 Square	2030mm	80"	Galv
S001216	45 Square	2170mm	85.5"	Galv



Square Axle 45mm

Product Code	Square (D)	Size in mm (L)	Size in Inch
S001067	45 Square	1550mm	61"
S001068	45 Square	1600mm	63"
S001069	45 Square	1625mm	64"
S001070	45 Square	1650mm	65"
S001071	45 Square	1675mm	66"
S001072	45 Square	1700mm	67"
S001073	45 Square	1730mm	68"
S001074	45 Square	1750mm	69"
S001075	45 Square	1775mm	70"
S001076	45 Square	1805mm	71"
S001077	45 Square	1830mm	72"
S001078	45 Square	1855mm	73"
S001079	45 Square	1880mm	74"
S001080	45 Square	1905mm	75"
S001081	45 Square	1930mm	76"
S001082	45 Square	1955mm	77"
S001083	45 Square	1980mm	78"
S001084	45 Square	2005mm	79"
S001085	45 Square	2030mm	80"
S001086	45 Square	2055mm	81"
S001087	45 Square	2110mm	83"
S001088	45 Square	2160mm	85"
S001089	45 Square	2210mm	87"
S001090	45 Square	2260mm	89"
S001091	45 Square	2285mm	90"
S001092	45 Square	2310mm	91"
S001093	45 Square	2335mm	92"
S001094	45 Square	2360mm	93"
S001095	45 Square	2385mm	94"
S001096	45 Square	2415mm	95"
S001097	45 Square	2435mm	96"
S001098	45 Square	2465mm	97"



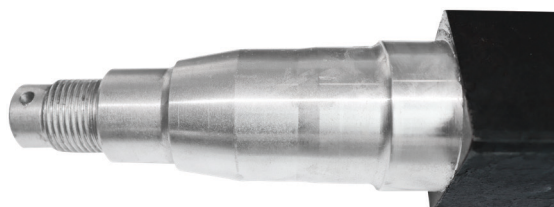
Square Parallel Axle 50mm

Product Code	Square (D)	Size in mm (L)	Size in Inch	Type
S001109	50 Square	1625mm	64"	Parallel
S001110	50 Square	1650mm	65"	Parallel
S001111	50 Square	1675mm	66"	Parallel
S001112	50 Square	1780mm	70"	Parallel
S001113	50 Square	1855mm	73"	Parallel
S001114	50 Square	1880mm	74"	Parallel
S001115	50 Square	1905mm	75"	Parallel
S001116	50 Square	1955mm	77"	Parallel
S001117	50 Square	1980mm	78"	Parallel
S001118	50 Square	2005mm	79"	Parallel
S001119	50 Square	2060mm	81"	Parallel
S001120	50 Square	2080mm	82"	Parallel
S001121	50 Square	2110mm	83"	Parallel
S001122	50 Square	2160mm	85"	Parallel
S001123	50 Square	2185mm	86"	Parallel
S001124	50 Square	2210mm	87"	Parallel
S001125	50 Square	2260mm	89"	Parallel
S001126	50 Square	2285mm	90"	Parallel
S001127	50 Square	2310mm	91"	Parallel
S001128	50 Square	2335mm	92"	Parallel
S001129	50 Square	2360mm	93"	Parallel
S001130	50 Square	2390mm	94"	Parallel
S001131	50 Square	2415mm	95"	Parallel
S001132	50 Square	2435mm	96"	Parallel
S018579	50 Square	2460mm	97"	Parallel



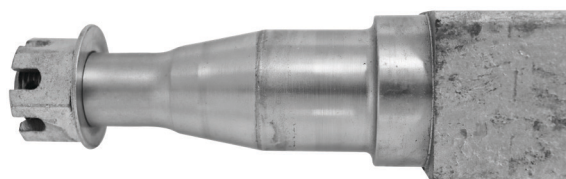
Round Dexter Style 65mm

Product Code	Square (D)	Size in mm (L)	Size in Inch	Type
S001167	65 Round	1980mm	78"	2T
S001168	65 Round	2285mm	90"	2T
S001166	65 Round	2360mm	93"	2T
S001169	65 Round	2435mm	96"	2T



Square Dexter Style 50mm

Product Code	Square (D)	Size in mm (L)	Size in Inch	Type
S001133	50 Square	1625mm	64"	2T
S018580	50 Square	1650mm	65"	2T
S018581	50 Square	1675mm	66"	2T
S001134	50 Square	780mm	70"	2T
S001135	50 Square	1855mm	73"	2T
S001136	50 Square	1880mm	74"	2T
S001137	50 Square	1930mm	76"	2T
S001138	50 Square	1955mm	77"	2T
S001139	50 Square	1980mm	78"	2T
S001140	50 Square	2005mm	79"	2T
S001141	50 Square	2030mm	80"	2T
S001142	50 Square	2060mm	81"	2T
S001143	50 Square	2110mm	83"	2T
S001144	50 Square	2160mm	85"	2T
S001145	50 Square	2210mm	87"	2T
S001146	50 Square	2260mm	89"	2T
S001147	50 Square	2285mm	90"	2T
S001148	50 Square	2310mm	91"	2T
S001149	50 Square	2335mm	92"	2T
S001150	50 Square	2360mm	93"	2T
S001151	50 Square	2390mm	94"	2T
S001152	50 Square	2415mm	95"	2T
S001153	50 Square	2435mm	96"	2T
S001154	50 Square	2465mm	97"	2T



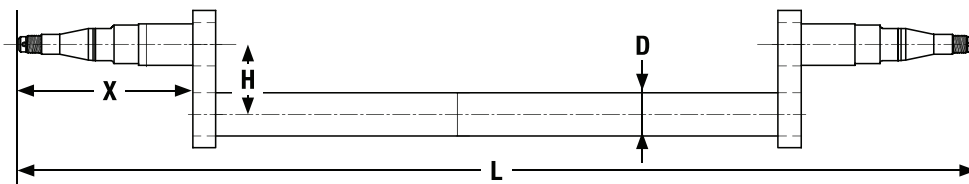
Square SL Galvanised 50mm

Product Code	Square (D)	Size in mm (L)	Size in Inch	Type
S001224	50 Square	1920mm	75.5	SL Galv
S001225	50 Square	2170mm	85.5	SL Galv

DROP AXLES



This axle is manufactured using 1045 grade drawn steel solid bar. It helps to lower the trailer for special purpose or better accessibility. The trailer can be lowered by 3" or 4", which is the gap between the stub axle and the main beam. This can be purchased bare or with lazy hubs assembled on both sides.

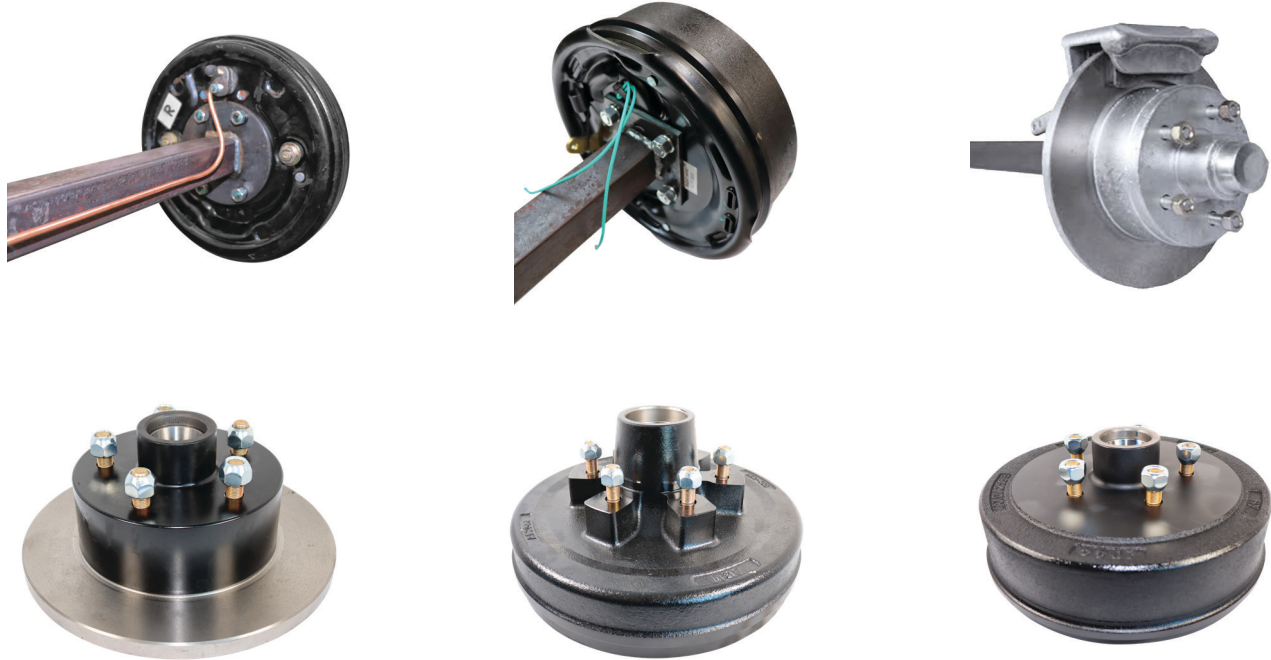


Stub Axle Size / Profile	Beam Size / Profile (D)	Axle Carrying Capacity (kg)	Machining Profile	Drop Height (H) mm/inches	Drop Arm Width	Stub Extension (X)	Length (L)
39mm round, 195mm Long	40 mm Square	1000 kg	LM	75mm (3")	25mm	170mm	Axles can be manufactured to your required length (to nearest 5mm increment)
39mm round, 195mm Long	40 mm Square	1000 kg	LM	100mm (4")	25mm	170mm	
45mm square, 195mm Long	45mm Square	1450 kg	SL	75mm (3")	25mm	170mm	
45mm square, 195mm Long	45mm Square	1450 kg	SL	100mm (4")	25mm	170mm	
50mm square, 195mm Long	50mm Square	1450 kg	SL	75mm (3")	32mm	170mm	
50mm square, 195mm Long	50mm Square	1600 kg	Parallel	100mm (4")	32mm	163mm	
50mm square, 260mm Long	50 mm Square	2000 kg	2.0 tonne	100mm (4")	32mm	228mm	

* Available in natural finish.

* Mounting flanges can be fitted as per request.

BRAKED AXLES



Axle Size (D)	Axle Beam Profile	Axle Carrying Capacity (kg)	Machining Profile	Common Brake Options
40mm	Square	1000 kg	LM	9" Mechanical, 9" Hydraulic. 10" Electric, Mechanical Disc & Hydraulic Disc
45mm	Square	1200 kg	SL	9" Mechanical, 9" Hydraulic, 10" Electric, Mechanical Disc & Hydraulic Disc
45mm	Square	1450 kg	SL	9" Mechanical, 9" Hydraulic, 10" Electric, Mechanical Disc & Hydraulic Disc
50mm	Square	1500kg	1.5 Tonne	12" Electric. 10" Hydraulic. Hydraulic Disc. Mechanical Disc
50mm	Square	1600kg	Parallel	10" Electric. 10" Hydraulic, Mechanical Disc Hydraulic Disc
50mm	Square	2000 kg	2.0 tonne	12" Electric, Hydraulic Disc. Mechanical Disc
63mm	Square	3000 kg	2.0 tonne	12" Electric
65mm	Round	2500 kg	2.0 tonne	12" Electric

**** Capacities shown are axle capacities and may not necessarily reflect compatible brake performance.**

BRAKED DROP AXLES



Axle Size (D)	Axle Beam Profile	Stub Axle Size/ Profile	Axle Carrying Capacity (kg)	Machining Profile	Drop Height (H) mm/ inches	Max Permissible Wheel Diameter	Common Brake Options
40mm	Square	39mm square	1000 kg	LM	75mm (3") 100mm (4")	14"	9" Mechanical, 9" Hydraulic, 10" Electric, Mechanical Dice & Hydraulic Disc
45mm	Square	45mm square	1450 kg	SL	75mm (3") 100mm (4")	16"	9" Mechanical, 9" Hydraulic, 10" Electric, Mechanical Dice & Hydraulic Disc
50mm	Square	50mm square	1600 kg	Parallel	75mm (3") 100mm (4")	16"	10" Electric, Mechanical Dice & Hydraulic Disc
50mm	Square	50mm square	2000 kg	2.0 tonne	75mm (3") 100mm (4")	16"	12" Electric, Hydraulic Disc, Mechanical Dice

**** Capacities shown are axle capacities and may not necessarily reflect compatible brake performance.**

AXLE ACCESSORIES

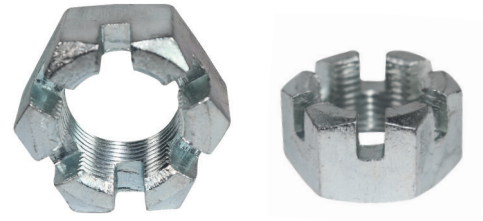


Axle Nut

- Zinc Finish
- Available in sizes to suit LM, SL, Parallel and 2T axle machining

S017754 Axle Nut 3/4" Zinc

S017755 Axle Nut Dexter Zinc



Axle Washer

- Zinc Finish
- Available in sizes to suit LM, SL, Parallel and 2T axle machining

S017756 Axle Washer

S017757 Axle Washer Dexter



Split Pin

- Zinc Finish
- Available in sizes to suit LM, SL, Parallel and 2T axle machining

S017758 Split Pin Zinc

S017759 Split Pin Dexter Zinc



Drop Axle Plate

- Axles suited: 40mm, 45mm and 50mm
- Drops suited: 2" and 4"
- Thickness: 25mm and 30mm

S017760 Drop Axle Plate 40 Square 2" drop

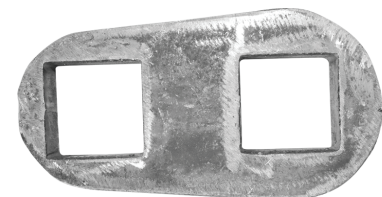
S017761 Drop Axle Plate 40 Square 4" drop

S017762 Drop Axle Plate 45 Square 2" drop

S017763 Drop Axle Plate 45 Square 4" drop

S017764 Drop Axle Plate 50 Square 2" drop

S017765 Drop Axle Plate 50 Square 4" drop



Backing Plate Mechanical

- Available in 9" and suitable to use with 9" drums.
- Maximum Capacity per axle is 1400 kg
- Comes configured as right and left, right being the driver's side

S018232 Backing Plate 9" Mechanical



Backing Plate Hydraulic

- Available in 9" (Max capacity = 1400 Kg), 10" (Max capacity = 1600 Kg and 12" (Max capacity = 2000 Kg)
- Comes configured as right and left, right being the driver's side
- Comes with cylinder and brake shoes already fitted.

S018233 Backing Plate 9" Hydraulic

S018234 Backing Plate 10" Hydraulic

S018235 Backing Plate 12" Hydraulic

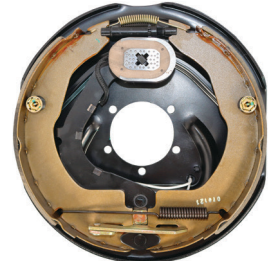


Backing Plate Electric

- Available in 10" (max capacity = 1600 Kg) and 12" (max capacity = 2400 Kg).
- Comes assembled with brake shoes, 12V magnet and handbrake lever.
- Comes configured as right and left, right being the driver's side.

S018236 Backing Plate 10" Electric

S018237 Backing Plate 12" Electric



Hydraulic Brake Caliper

- Suits 10" and 12" disc hubs.
- Comes complete with brake pads and mounting hardware.
- Hot dip galvanized finish.

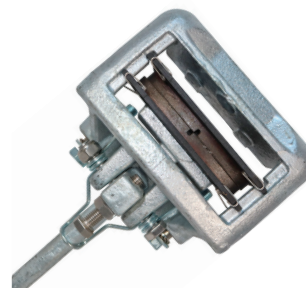
S018242 Hydraulic Brake Caliper



Brake Caliper Mechanical

- Ratchet style-braking lever not the conventional spring.
- Comes complete with pads and mounting bolts.
- Hot dip galvanized finish.
- Suits 10" and 12" Disc hubs.

S018243 Brake Caliper Mechanical



BRAKES ACCESSORIES



Electric Brake Shoe Ste

- Available for 9" Hydraulic Brakes, 10" and 12" Electric Brakes.
- Salt Water tested and approved.

S018245 9" Electric Brake Shoe Ste

S018246 10" Hydraulic Brake Shoe Ste

S018247 12" Electric Brake Shoe Ste



Brake Cable Adjuster

- Zinc Plated
- Suits 4mm Cable

S018248 Brake Cable Adjuster



Hydraulic Hose Complete

- Flexible hose
- Used with hydraulic brakes
- Can be connected to T Piece

S018254 Hydraulic Hose Complete



Brake cable Clip

- Galvanised Finish
- Available to suit 4mm and 6mm wire

S018294 Brake cable Clip 4mm

S018295 Brake cable Clip 6mm



T Piece Hydraulic

- Can be connected with Hydraulic Hose
- Length – 19mm

S018255 T Piece Hydraulic



Electric Brake Magnet

- Available for 10" and 12" electric brakes

S018268 Magnet Electric Brake 10"

S018269 Magnet Electric Brake 12"



BRAKES ACCESSORIES



Bundy Tube

- Zinc Plated
- Overall diameter 3/16
- See below table for size information

S018258	Bundy Tube 65" Complete
S018259	Bundy Tube 77" Complete
S018260	Bundy Tube 89" Complete
S018261	Bundy Tube 95" Complete
S018262	Bundy Role 3M Pre Flared
S018266	Bundy Role 3.5M Pre Flared
S018263	Bundy Role 4M Pre Flared
S018586	Bundy Role 4.5M Pre Flared
S018267	Bundy Role 5M Pre Flared
S018264	Bundy Role 25M
S018265	Bundy Role 100M



Bearing Buddy

S018288	Bearing Buddy LM/SL
----------------	---------------------



Kidney Plates

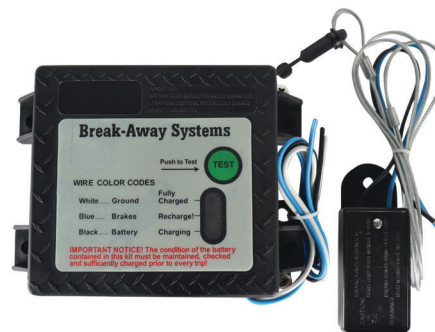
S018282	Disc Flange Kidney Plate 40mm 10"
S018283	Disc Flange Kidney Plate 45mm 10"
S018284	Disc Flange Kidney Plate 40mm 12"
S018285	Disc Flange Kidney Plate 45mm 12"
S018286	Disc Flange Kidney Plate 50mm 12"



Break Away Unit

- Brakes Activate Upon Separation From Tow Vehicle
- 7" Switch Wires
- Side Mountable
- Test Button To Verify Battery Charge
- Built In Battery Charger
- LEDs Indicate Fully Charged/Re-Charge/Charging
- Built In Battery Meter w/Test Lights
- Charges Battery While Plugged Into Vehicle
- 1 to 2 axle capacity

S017860	Break Away Unit Engager Kit
----------------	-----------------------------



BRAKES ACCESSORIES



Mounting Plate

- Natural finish
- Please refer below table for all kinds



S018270 Mounting Plate Hydraulic 39 Round

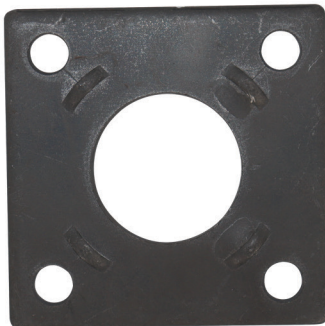
S018271 Mounting Plate Hydraulic 45 Round



S018272 Mounting Plate Hydraulic 40 Square

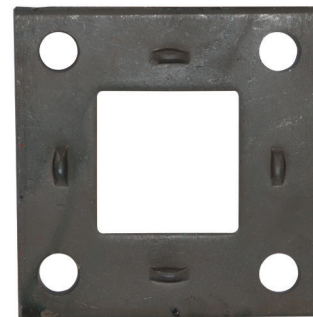
S018273 Mounting Plate Hydraulic 45 Square

S018274 Mounting Plate Hydraulic 50 Square



S018275 Mounting Plate Electrical 39 Round

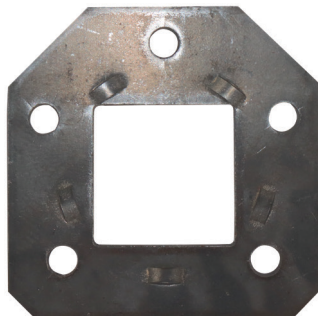
S018276 Mounting Plate Electrical 45 Round



S018277 Mounting Plate Electrical 40 Square

S018278 Mounting Plate Electrical 45 Square

S018279 Mounting Plate Electrical 50 Square



S018280 Mounting Plate Electrical 40 Square 12" Drum

S018281 Mounting Plate Electrical 63 Square 12" Drum

S018287 Mounting Plate Electrical 65 Round 12" Drum

HUBS AND DRUMS



Lazy Hubs - Black

- Available in 6" Ford (5x114.3)/ HT (5x108)/ HQ (5x120.65)
- Ford and LC with ½" studs and HT and HQ with 7/16" studs.
- Available in 8" LC (6x139.7)
- Available to suit LM and SL bearings in all stud patterns.
- Natural finish
- Strong SG Iron casting.
- Comes complete with dust cap, oil seal and bearings.

Note

- LM Bearings (Inner – 67048, Outer – 11949)
- SL Bearings (Inner – 68149, Outer – 12749)

S018104	Hub Ford LM Complete
S018105	Hub Ford LM Complete Pre-Greased
S018106	Hub Ford SL Complete
S018107	Hub HT LM Complete
S018108	Hub HT SL Complete
S018109	Hub HQ LM Complete
S018110	Hub HQ SL Complete
S018118	Hub LC LM Complete 6 Stud
S018119	Hub LC SL Complete 6 Stud
S018914	Hub Ford Parallel Complete
S018915	Hub LC 6 Stud Parallel Complete
S018916	Hub LC 6 Stud 2 Ton Bearings Complete



Lazy Hubs - Galvanised

- Available in 6" Ford (5x114.3)/ HT (5x108)
- Ford with ½" studs and HT 7/16" studs
- Available to suit LM and SL bearings in all stud patterns.
- Hot-dip Galvanized finish
- Strong SG Iron casting.
- Comes complete with dust cap, Marine oil seal and bearings.

Note

- LM Bearings (Inner – 67048, Outer – 11949)
- SL Bearings (Inner – 68149, Outer – 12749)

S018124	Hub Ford LM Complete Galv
S018125	Hub Ford SL Complete Galv
S018126	Hub HT LM Complete Galv
S018127	Hub HT SL Complete Galv



Disc Hub

- Available in 10" Ford (5×114.3)/ HT (5×108)/ HQ (5×120.65)
- Ford with ½" studs and HT and HQ with 7/16" studs.
- Available to suit LM and SL bearings in all stud patterns.
- Natural finish.
- Strong SG Iron casting.
- Comes complete with dust cap, oil seal and bearings.

Note

- LM Bearings (Inner – 67048, Outer – 11949)
- SL Bearings (Inner – 68149, Outer – 12749)

S018134	Disc Ford LM Complete
S018135	Disc Ford SL Complete
S018136	Disc HT LM Complete
S018137	Disc HT SL Complete



Disc Hub Galvanized

- Available in 10" Ford (5×114.3)/ HT (5×108)
- Ford with ½" studs and HT with 7/16" studs.
- Available to suit LM and SL bearings in all stud patterns.
- Hot-dip Galvanized finish
- Strong SG Iron casting.
- Comes complete with dust cap, Marine oil seal and bearings.

Note

- LM Bearings (Inner – 67048, Outer – 11949)
- SL Bearings (Inner – 68149, Outer – 12749)

S018153	Disc Ford LM Complete - Galv
S018154	Disc Ford SL Complete - Galv
S018155	Disc HT LM Complete - Galv
S018156	Disc HT SL Complete - Galv



HUBS AND DRUMS



Drums

- Available in 9" Ford/ HQ/ HT with both LM/ SL bearing configuration
- Available in 10" Ford/ LC with LM/ SL/ Parallel bearing configuration
- Available in 12" LC with 2T bearing configuration

Note

- LM Bearings (Inner – 67048, Outer – 11949)
- SL Bearings (Inner – 68149, Outer – 12749)
- Parallel Bearings (Inner/ Outer – 68149)
- 2T Bearings (Inner 15123, Outer – 25580)

S018163	Drum Ford 9" LM Complete
S018164	Drum Ford 9" SL Complete
S018166	Drum HQ 9" LM Complete
S018167	Drum HQ 9" SL Complete
S018175	Drum Ford 10" LM Complete
S018176	Drum Ford 10" SL Complete
S018177	Drum Ford 10" PARALLEL Complete
S018191	Drum LC 6 Stud 10" LM Complete
S018192	Drum LC 6 Stud 10" SL Complete
S018193	Drum LC 6 Stud 10" PARALLEL Complete
S018198	Drum LC 6 Stud 12" Dexter Complete



HUBS ACCESSORIES

Wheel Studs & Nuts

- All studs have UNF thread
- Available in 1/2", 7/16" and 9/16"

S018199	Wheel Stud 7/16 Zinc
S018200	Wheel Stud 1/2 Zinc
S018201	Wheel Stud 9/16 Zinc
S018202	Wheel Nut 7/16 Zinc
S018203	Wheel Nut 1/2 Zinc
S018204	Wheel Nut 9/16 Zinc



Hub bearing

- Available in LM, SL, Parallel and 2T.
- Comes in a set.
- Available in bulk and box packaging.

Note

- LM Bearings (Inner – 67048, Outer – 11949)
- SL Bearings (Inner – 68149, Outer – 12749)
- Parallel Bearings (Inner/ Outer – 68149)
- 2T Bearings (Inner 15123, Outer – 25580)

S018205	Bearing LM
S018206	Bearing SL
S018207	Bearing Parallel
S018208	Bearing Dexter
S018213	Bearing LM Japanese Box Packing
S018214	Bearing SL Japanese Box Packing
S018215	Bearing Parallel Japanese Box Packing
S018216	Bearing Dexter Japanese Box Packing



Oil Seals

- Suits Lazy hubs, Disc hubs and drums
- Available to suit LM, SL, Parallel and 2T bearings
- Available as automotive and marine oil seal

S018217	Oil Seal LM
S018218	Oil Seal SL
S018219	Oil Seal LM Marine
S018220	Oil Seal SL Marine
S018221	Oil Seal Parallel
S018222	Oil Seal Dexter



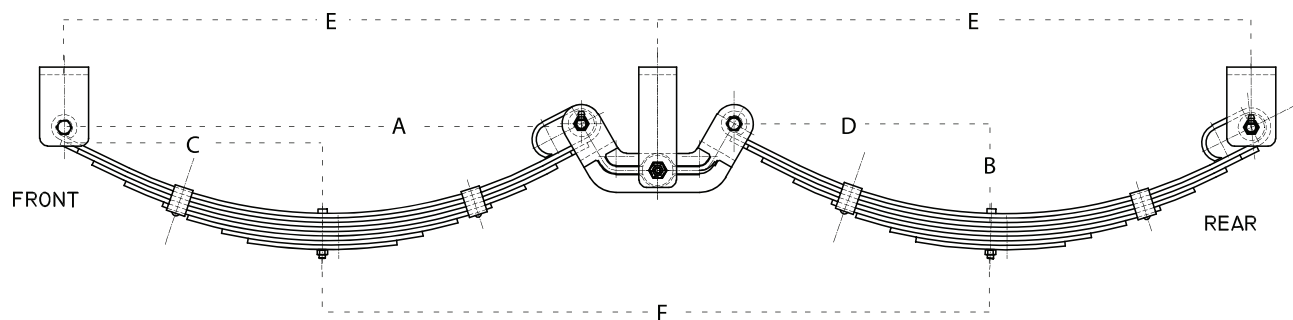
Dust Cap LM/SL

- Suits lazy hubs, disc hubs and drums
- Zinc finish
- Available to suit LM, SL, Parallel and 2T bearings

S018223	Dust Cap LM/SL
S018224	Dust Cap Parallel
S018225	Dust Cap Dexter



ROCKER ROLLER SETS



60mm Rocker Roller Spring Assembly, Black

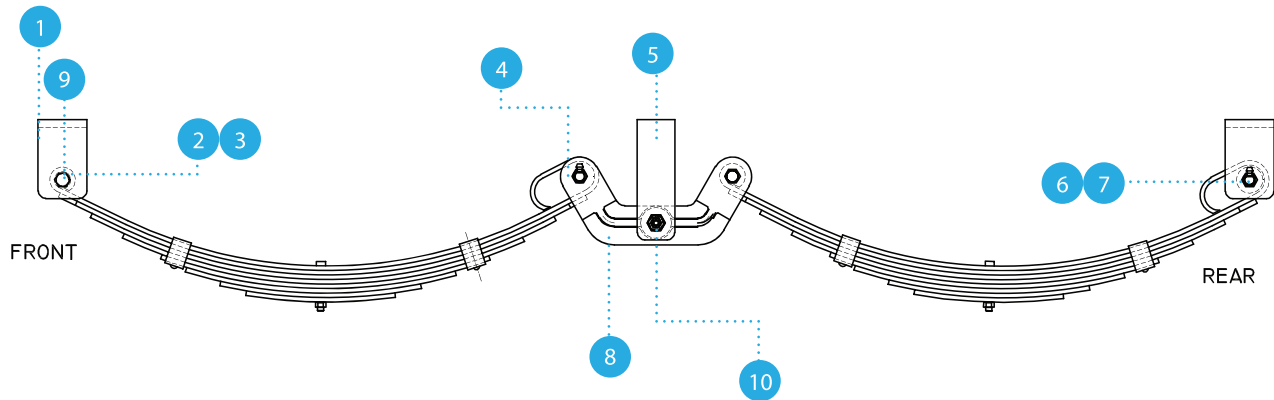
Product Code	Description	Leaf Thickness	A	B	C	D	E	F	Pair Capacity
S017947	5 Leaf rocker roller Suit 14" Wheels	6mm	687mm	117mm	396mm	291mm	787mm	785mm	2000 Kg
S017948	6 Leaf rocker roller Suit 14" Wheels	6mm	687mm	117mm	396mm	291mm	787mm	785mm	2500 Kg
S017949	7 Leaf rocker roller Suit 14" Wheels	6mm	687mm	117mm	396mm	291mm	787mm	785mm	3000 Kg
S017950	7 Leaf rocker roller Suit 15" & 16" Wheels	6mm	687mm	117mm	343mm	343mm	787mm	888mm	3000 Kg
S017951	8 Leaf rocker roller Suit 15" & 16" Wheels	6mm	687mm	117mm	343mm	343mm	787mm	888mm	3500 Kg
S017952	9 Leaf rocker roller Suit 15" & 16" Wheels	6mm	687mm	117mm	343mm	343mm	787mm	888mm	4000 Kg
S017958	9 Leaf rocker roller Suit 15" & 16" Wheels	7mm	687mm	117mm	343mm	343mm	787mm	888mm	4500 Kg

60mm Rocker Roller Spring Assembly, Dacromat

Product Code	Description	Leaf Thickness	A	B	C	D	E	F	Pair Capacity
S017965	5 Leaf rocker roller Suit 14" Wheels	6mm	687mm	117mm	396mm	291mm	787mm	785mm	2000 Kg
S017966	6 Leaf rocker roller Suit 14" Wheels	6mm	687mm	117mm	396mm	291mm	787mm	785mm	2500 Kg
S017967	7 Leaf rocker roller Suit 14" Wheels	6mm	687mm	117mm	396mm	291mm	787mm	785mm	3000 Kg

ROCKER ROLLER SETS SUPPORT

Service & Kit Parts



S018000 & S018001
Front/Rear Hanger



S018761
Shackle Pin



S018763
Shackle Pin
Nyloc Nut 16mm



S018027
Steel Roller Bush



S018004
Centre Rocker
Hanger



S018762
Shackle Pin
Greasable 16mm



S018775
Spring Nylon
Bush 16mm



S018760
Centre
Rocker Arm



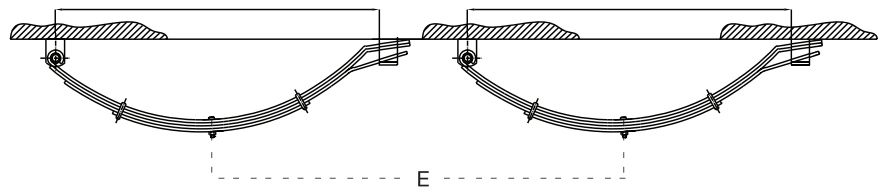
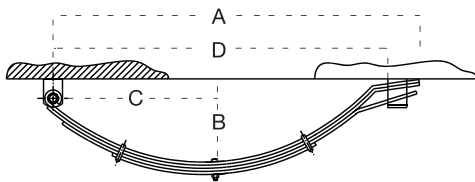
S018765
Centre Rocker Pin
Greasable 18mm



S018766
Centre Rocker Pin
Nyloc Nut 18mm

LEAF SPRINGS

Eye to Slipper 45mm x 6mm



45x6mm Eye to Slipper Springs, Black

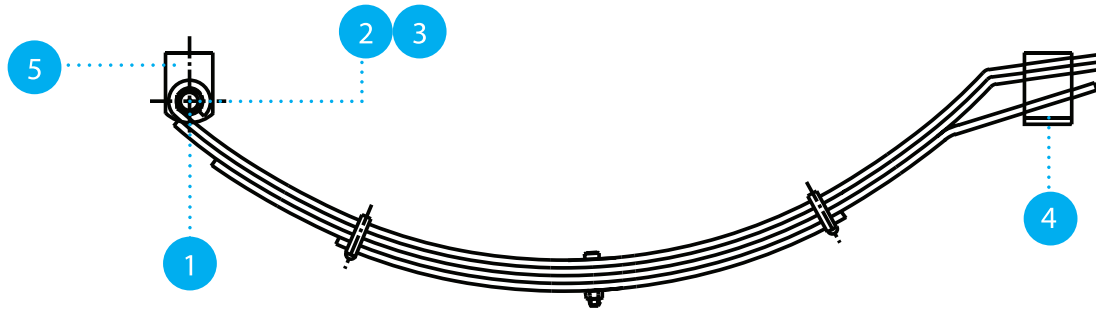
Product Code	Description	Bush Dimensions	A	B	C	D	E	Pair Capacity
S017922	3 Leaf eye to slipper spring	1/2"x7/8"x45mm	765mm	155mm	330mm	700mm	725mm	600 Kg
S017923	4 Leaf eye to slipper spring	1/2"x7/8"x45mm	765mm	155mm	330mm	700mm	725mm	900 Kg
S017924	5 Leaf eye to slipper spring	1/2"x7/8"x45mm	765mm	155mm	330mm	700mm	725mm	1000 Kg
S017925	6 Leaf eye to slipper spring	1/2"x7/8"x45mm	765mm	155mm	330mm	700mm	725mm	1200 Kg
S017926	7 Leaf eye to slipper spring	1/2"x7/8"x45mm	765mm	155mm	330mm	700mm	725mm	1350 Kg
S017927	9 Leaf eye to slipper spring	1/2"x7/8"x45mm	765mm	155mm	330mm	700mm	725mm	1600 Kg

45x6mm Eye to Slipper Springs, Dacromat

Product Code	Description	Bush Dimensions	A	B	C	D	E	Pair Capacity
S017959	3 Leaf eye to slipper spring	1/2"x7/8"x45mm	765mm	155mm	330mm	700mm	725mm	600 Kg
S017960	4 Leaf eye to slipper spring	1/2"x7/8"x45mm	765mm	155mm	330mm	700mm	725mm	900 Kg
S017961	5 Leaf eye to slipper spring	1/2"x7/8"x45mm	765mm	155mm	330mm	700mm	725mm	1000 Kg
S017962	6 Leaf eye to slipper spring	1/2"x7/8"x45mm	765mm	155mm	330mm	700mm	725mm	1200 Kg
S017963	7 Leaf eye to slipper spring	1/2"x7/8"x45mm	765mm	155mm	330mm	700mm	725mm	1350 Kg

EYE & SLIPPER SPRINGS SUPPORT

Eye Slipper Spring 45mm Service & Kit Parts



1



S018776

Spring Nylon Bush 1/2"
ID 1/2" OD 7/8" L 45mm

2



S018079

Shackle Bolt
Non-Greasable 1/2"

3



S018084

Shackle Bolt Nylloc
Nut 1/2" BSW

4



S017794

Rear Slipper Hanger
45mm spring

5



S017996

Deep Front Slipper Hanger
45mm Spring 1/2" Bolt

LEAF SPRING ACCESSORIES



Front Hanger 45x6

- Suits 45x6mm springs
- Suits 1/2" bolts
- Natural finish

S017993 Front Hanger 45x6



Rear Hanger 45x6 5mmOver Plate

- Suits 45x6mm springs
- Welded with 5mm thick plate
- Natural finish

S017994 Rear Hanger 45x6 5mmOver Plate



Deep Hanger 40x8

- Available in 40x8mm and 50x10mm
- Natural finish
- Suits 45x6mm springs
- Suits 1/2" bolts.

S017996 Deep Hanger 40x8

S017997 Deep Hanger 50x10



Center Hanger 60mm Spring 10mm

- Suits 60mm rocker rollers
- 10mm thick
- Natural finish
- Suits 5/8" bolts

S018004 Center Hanger 60mm Spring 10mm



Axle Pad 45x45 Natural

- 45x45x8mm size
- Natural finish
- Suits 40mm, 45mm and 50mm axle

S018009 Axle Pad 45x45 Natural

S018010 Axle Pad 10mm 45x45 Natural

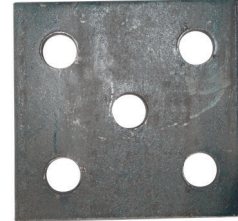


LEAF SPRING ACCESSORIES



Fish Plates

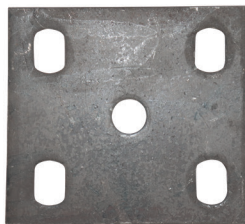
- Available in round and slotted holes.
- Available in natural and galvanized finish
- Standard fish plate to suit 39Rd, 40Sq and 45sq axle available in 6mm and 8mm thickness with holes to suit 1/2" U bolts.
- Fish plates to suit 50mm and 60mm springs are available in 8mm & 10mm thickness with holes to suit 5/8" U bolts.



S018013 Fish Plate 45x6 - Round Hole Natural



S018014 Fish Plate Slotted 45mm Spring Natural



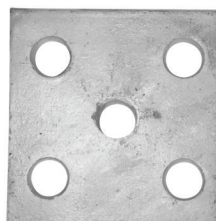
S018015 Fish Plate 60mm Spring 8mm Slotted Natural Suits 1/2 U Bolt



S018016 Fish Plate 60mm Spring 10mm Slotted 45-50 Axle - Natural Suits 5/8 U Bolt



S018017 Fish Plate 60mm Spring 10mm 63-65 Axle - Natural



S018018 Fish Plate 45x6 - Round Hole Galv



S018019 Fish Plate Slotted 45mm Spring 8mm - Galv

COUPLING

(Approved as per ADR 62/02-2007)



3/4 Hole Unbraked Fixed Coupling

- Available in Zinc
- Multi holes to suit 2 hole and 3 hole coupling plate
- Rated at 2000 Kg
- As per AS4177.3
- Fits 50mm towball
- Suits 1/2" bolts

S017767 Coupling 3 Hole MultiFit Zinc



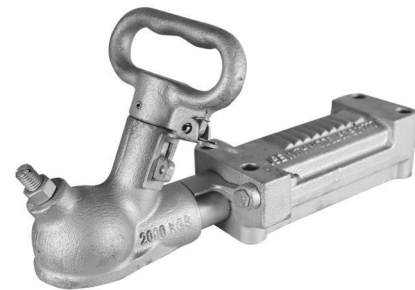
Override Coupling 2000kg Rated

- Available in Zinc
- Suits 50mm tow ball
- Rated at 2000 Kg
- Fitted with reversing lock and padlock facility
- As per AS4177.3
- Available as a complete package to suit hydraulic brakes
- Available as a complete package to suit mechanical brakes

S017772 Coupling Override 2T Zinc

S017775 Coupling Hydraulic Complete Zinc 2T

S017778 Coupling Mechanical Complete Zinc 2T



Electric Coupling 50mm – 3500kg Rated

- Zinc finish
- Suits 50mm tow ball
- Rated at 3500 Kg
- As per AS4177.3

S017781 Coupling Electric 3.5T Zinc 50mm Ball



Hydraulic Master Cylinder

- Suits ¾ and 7/8 master cylinder
- Suits over ride coupling
- Available in zinc and paint finish

S017789 Hydraulic Master Cylinder 3/4"



Hydraulic Brake Bracket

- Suits ¾ and 7/8 master cylinder
- Suits over ride coupling
- Available in zinc and paint finish

S017792 Hydraulic Brake Bracket Zinc



Mechanical Brake Override Bracket

- Suits over ride coupling
- Zinc finish

S017794 Mechanical Brake Override Bracket – Zinc



Coupling Plate

- Available to suit 3 hole non braked coupling.
Thickness: 6mm.
- Available to suit 4 hole over ride coupling.
Thickness: 6mm and 8mm.
- Available to suit 4 hole electric coupling.
Thickness: 8mm and 10mm.



S017796 Coupling Plate 3 Hole Multi Fit



S017797 Coupling Plate 4 Hole Triangular 6mm



S017798 Coupling Plate 4 Hole Triangular 8mm



S017799 Coupling Plate 4 Hole Triangular 10mm

Coupling Plate

- Suits 3 hole non braked, override and electric coupling with 50mm tow ball.
- Comes with Padlock

S017802 Coupling Lock with Pad Lock



Handle Tail Gate Left & Right

- Natural finish
- Comes as right and left

S018040 Handle Tail Gate Left

S018041 Handle Tail Gate Right



Jerry Can Holder

- Natural finish
- Size: 365x185mm
- Depth: 215mm

S018042 Jerry Can Holder Natural



D Shackles

- Used to tie trailer chain to the tow bar.
- Rated as per AS2741.
- Yellow pin
- Galvanised finish

S018047 D Shackle Rated 8mm

S018048 D Shackle Rated 10mm

S018049 D Shackle Rated 11mm

S018050 D Shackle Rated 13mm

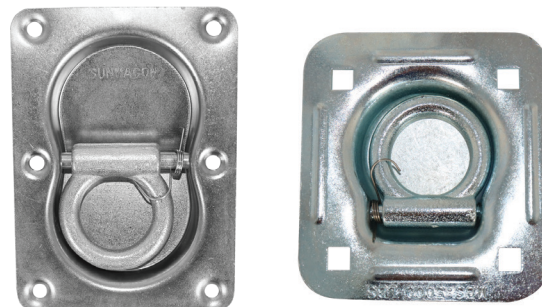
S018585 D Shackle Rated 16mm



Lashing Rings

- Zinc finish
- Available in 2000lbs and 5000lbs

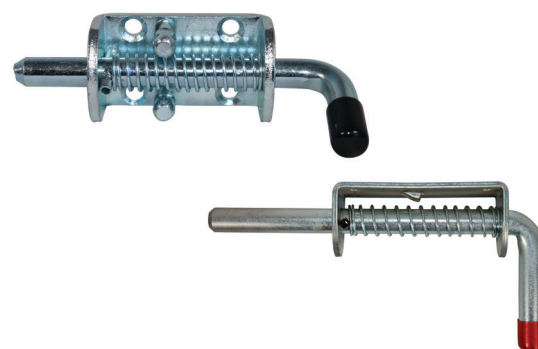
S018058	Lashing Ring 2000LBS
S018059	Lashing Ring 5000LBS
S018060	Lashing Ring 5000LBS Double



Spring Latch

- Zinc finish
- Available in sizes 12x130mm, 12x136mm, 12x170mm and 19x255mm
- Weldable

S018064	Spring Latch Basic 12x130
S018065	Spring Latch 12x136
S018066	Spring Latch 12x170
S018067	Spring Latch Jumbo 19x255



T Lock Heavy Duty

- Zinc finish
- Available in Stainless steel
- Heavy duty lock
- Includes 2 keys
- Comes with gasket
- Size: 120mm x 123mm

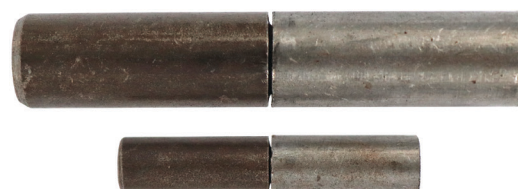
S018071	T Lock Heavy Duty
----------------	-------------------



Pin Hinge

- Natural finish
- Available in 12x12x60mm, 19x19x100 and 36x125mm
- Weldable

S018074	Pin hinge Number Plate 12x12x60
S018075	Pin Hinge Back Door 19x19x100
S018076	Pin Hinge Jumbo 36x125



Bolt HT

- Zinc finish
- High tensile
- Dia: 1/2"
- Length: 1.5", 3.5", 4" and 4.5"
- Available in half and full thread
- Thread BSW

S018077 Bolt HT 1/2 x 1-1/2" Zinc

S018079 Bolt HT 1/2 x 3.5" Zinc Half Thread

S018080 Bolt HT 1/2 x 4.5" Zinc Half Thread



Nylock Nut

- Zinc finish
- Suits 1/2" bolts
- Thread BSW

S018084 Nylock Nut 1/2"



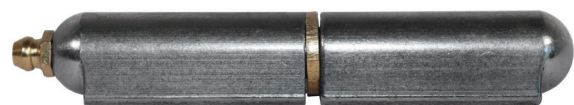
Greasable Hinge

- Weldable
- Brass pin and washer
- Comes with grease nipples.
- Available in 16x100mm, 16x160mm and 20x150mm

S018291 Greasable Hinge 16x100

S018292 Greasable Hinge 16x160

S018293 Greasable Hinge 20x150



Trailer Safety Chains

- Electrostatic Zinc finish
- Rated as per AS4177.4-2004 & AS2321-2001
- Complies with all markings of the standard
- Available in 25 kg bags
- Rating is stamped before every 4 links
- Available in 6mm, 8mm, 10mm and 13mm

S018662	Safety Chain 4mm 390mm long - 12 Links
S018663	Safety Chain 6.3mm 800mm long - 24 Links - AS4177.4-2004 (1-Ton Rated)
S018664	Safety Chain 8mm 800mm long - 19 Links - AS4177.4-2004 (1.6-Ton Rated)
S018665	Safety Chain 10mm 800mm long - 16 Links - AS4177.4-2004 (2.5-Ton Rated)
S018773	Safety Chain 13mm - 25 Kg Bags - AS4177.4-2004 (3.5-Ton Rated)
S018774	Safety Chain 13mm - 25 Kg Bags - AS2321-2001 (Suitable for Trailers over 3.5 Ton)



Chain Connector

S018666	Chain Connector 6mm - 1.12 Ton Rated
S018667	Chain Connector 8mm - 2 Ton Rated
S018668	Chain Connector 10mm - 3.15 Ton Rated
S018669	Chain Connector 13mm - 5.3 Ton Rated



U-Bolts (all u-bolts include nyloc nuts)

- Zinc finish
- Available in 1/2" and 5/8"
- Multiple sizes to suit 39Rd, 40sq, 45Sq, 50Sq, 63Sq and 65Rd axles.
- Comes with nyloc nuts

S018363	39R 5.5" U Bolts Zinc
S018364	U Bolt 40x5" Square
S018365	U Bolt 40x5.5" Square
S018366	U Bolt 45x5" Square
S018367	U Bolt 45x5.5" Square
S018368	U Bolt 50x5" Square
S018369	U Bolt 50x5.5" Square
S018370	U Bolt 75x75 Square
S018371	U Bolt 100 x 75 Square
S018372	U Bolt 45 Square 6" - 5/8
S018373	U Bolt 50 Square 6.5" - 5/8
S018374	U Bolt 63 Square 170mm - 5/8
S018375	U Bolt 65 Round 170mm - 5/8



CAGES

Galvanised Cages

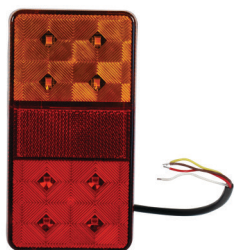
- Hot dip galvanized finish
- Mesh size: 50x50mm or 70x50mm
- Available in single and barn doors.

S017882	Cage 6x4x2 Galv
S017883	Cage 6x4x3 Galv
S017884	Cage 7x4x2 Galv
S017885	Cage 7x4x3 Galv
S017886	Cage 7x5x2 Galv
S017887	Cage 7x5x3 Galv
S017888	Cage 8x5x2 Galv
S017889	Cage 8x5x3 Galv



LED Rear Lamps

- Available in Multivolt 12V-24V
- Sizes available: 100x100mm, 150x80mm, 275x100mm
- Complies with Australian standard/ E-Mark approved



CTA-060382

S017811

LED 150x80 Multivolt
12V-24V



CTA-060381

S018583

LED 100x100 MV



CTA-060380

S017815

LED 275x100 MV

LED Number Plate Light

- Available in Multivolt 10-30V
- Complies with Australian standard/ E-Mark approved

S017816

LED Number Plate Light



CTA-060379

LED Side Marker Red n Amber

- Available in Multivolt 10-30V
- Complies with Australian standard/ E-Mark approved

S017817

LED Side Marker Red n Amber



CTA-060373, CTA-060377

Reflector

- Stick on
- Complies with Australian standard/ E-Mark approved
- Available in red, amber and white.
- Size: 70x30mm to 94x44mm

S017821	Reflector Amber
S017822	Reflector Red
S017823	Reflector White



70x30mm - CTA 060374
94x44mm - CTA 060376

Plug

- Available in 7 pin flat and round.
- Amp rating per pol 15 amp@12v
- Adaptors flat to round and round to flat also available.

S017836	Plug 7 PIN Flat
S017838	Plug 7 PIN Round
S017840	Plug 7 PIN Round to Flat
S017841	Plug 7 PIN Flat to Round



Cable Wire

- Available in 2 core, 5 core and 7 core
- 9/0.29 and 29/0.29
- Wrapped on stool with 30m, 100m and 500m rolls.

S017844	Cable 2 Core - 30M
S017845	Cable 2 Core - 100M
S017852	Cable 5 Core - 30M
S017853	Cable 5 Core - 100M
S017854	Cable 5 Core - 500M
S017857	Cable 7 Core - 30M
S017858	Cable 7 Core - 100M



TRAILER WINCH



Trailer winch

- Available in strap and wire rope.
- Zinc finish



S018329 Winch 2500LBS Belt



S018330 Winch 2500LBS Cable



Rims & Tyres

- Available in Ford (5×114.3), HT (5×108), HQ (5×120.65) and LC (6×139.7) stud patterns.
- Multi (Ford/HT) also available
- Both powder coated and Hot dip galvanized
- 13", 14", 15" and 16" synaysia Wheels fitted on Light truck tires



S018462	13" Ford White + 155R13LT
S018609	13" HT White + 155R13LT
S018463	13" Ford White + 165R13LT
S018610	13" HT White + 165R13LT
S018464	13" Ford Galv + 155R13LT
S018611	13" HT Galv + 155R13LT
S018612	13" Ford/ HT Multi Galv + 155R13LT
S018613	13" Ford Galv + 165R13LT
S018614	13" HT Galv + 165R13LT
S018615	13" Ford/ HT Multi Galv + 165R13LT
S018465	14" Ford White + 185R14LT
S018616	14" Ford Black + 185R14LT

S018617	14" HT White + 185R14LT
S018618	14" HQ White + 185R14LT
S018467	14" Ford Galv + 185R14LT
S018468	15" LC White + 195R15LT
S018621	15" FORD White + 195R15LT
S018780	15" LC White + 235/75R15LT
S018469	15" LC White + 235/75R15LT
S018622	15" LC Black + 235/75R15LT
S018470	16" LC White + 265/75R15 MT
S018623	16" LC White + 265/75R15 AT
S018624	16" LC Black + 265/75R15 MT
S018625	16" LC Black + 265/75R15 AT

Rims

- Available in Ford (5x114.3), HT (5x108), HQ (5x120.65) and LC (6x139.7) stud patterns.
- Multi (Ford/HT) also available
- Both powder coated and Hot-dip galvanized
- 13", 14", 15" and 16" synraysia Wheels

Capacity

- 13x4.5 Rim – 671 Kg
- 14x6 Rim – 850 Kg
- 15x6 Rim – 1179 Kg
- 16x6 Rim – 1701 Kg



S018424	13"x4.5 Ford White
S018426	13"x4.5 HT White
S018427	13"x4.5 Ford Galv
S018428	13"x4.5 HT Galv
S018429	13" Ford/HT Multi Rim Gal
S018430	13" Ford/HT Multi Rim White
S018432	14"x6 Ford White
S018433	14"x6 Ford White ET7
S018434	14"x6 Ford Black
S018435	14"x6 HT White
S018436	14"x6 HQ White
S018437	14"x6 HQ Black
S018438	14"x6 LC White

S018439	14"x6 Ford Galv
S018440	14" HQ Rim Gal
S018442	15" Ford White
S018443	15" Ford Black
S018444	15" LC White
S018445	15" LC Black
S018446	15" LC Gal
S018447	15" Ford Galv
S018448	16" LC White
S018449	16" LC Black

Tyres

- DOT rated and ADR compliant
- Light truck tires
- Available in 13", 14", 15" and 16"

Capacity of most common sizes (Information on more sizes available on request)

- 155R13LT – 600 Kg
- 165R13LT – 670 Kg
- 185R14LT – 850 Kg
- 235/75R15LT – 1250 Kg



S018450	145R13LT
S018451	155R13LT
S018452	165R13LT
S018453	185R14LT
S018457	195/75R15LT
S018459	235/75R15LT
S018460	265/75R16LT All Terrain
S018461	265/75R16LT Mud Terrain
S018659	245/75R16LT All Terrain

MUDGUARDS



Mudguards

- Natural finish
- Smooth sheet (1.6mm)
- Cheq plate (2.1mm)
- Available in multiple configurations
- Available in both single and tandem axle.
- For sizes, see below table with SKU.

S018332	Single Axle 4 Fold 9 Smooth
S018334	Single Axle 4 Fold 10 Smooth
S018335	Single Axle 4 Fold 9 Cq Plate
S018336	Single Axle 4 Fold 10 Cq Plate
S018337	Tandem Guard 4 Fold 9 Smooth (84)
S018338	Tandem Guard 4 Fold 10 Smooth (84)
S018339	Tandem Guard 4 Fold 9 Smooth (91)
S018340	Tandem Guard 4 Fold 10 Smooth (91)
S018341	Tandem Guard 4 Fold 9 Cq Plate (84)
S018342	Tandem Guard 4 Fold 10 Cq Plate (84)
S018343	Tandem Guard 4 Fold 9 Cq Plate (91)
S018344	Tandem Guard 4 Fold 10 Cq Plate (91)



DROP DOWN LEGS



Drop Down Legs

- Power coated
- Available in heights (400mm, 450mm and 500mm)
- Load capacity: 1000 lbs per pair
- Easy pull down handle to drop down

S018917 Drop Down Leg 550mm 1000Lbs - Pair

S018321 Drop Down Leg 450mm 1000Lbs - Pair



Drop Down Legs (Premium Series)

- Zinc finish
- Load capacity: 1000 lbs per pair
- Heavy duty aluminum casting feet
- Easy pull down handle to drop down

S018758 Drop Down Legs 365mm-515mm

S018759 Drop Down Legs 490mm-735mm



JOCKEY STANDS



Jockey Stands

- Powder coated finish
- Sidewind
- Available with the swing up mechanism.
- Available in 2000lbs, 5000lbs, 7000lbs (15"+13" Extendable)



S018311 Square Jack 2000 LBS



S018313 Square Jack 7000 LBS Extendable



S018312 Square Jack 5000 LBS

JOCKEY WHEELS



Budget Range

- Zinc Finish
- Available in 6", 8" and 10"
- Heavy duty
- Swing Up Mechanism
- Top wind

Static load capacity

- 6" – 750 Lbs
- 8" – 1000 Lbs

S018305	Jockey Wheel 6" Swing Up
S018306	Jockey Wheel 8" Swing Up Heavy Duty
S018918	Jockey Wheel 6" Swing Up (Series 1)



Jockey Wheels Premium Series

- Zinc Finish
- Available in 8" and 10"
- Heavy duty
- Available in both designs (Swing up arm and removable C Clamp)
- Top wind
- Side Wind

Static load capacity

- 8" – 1000 Lbs
- 10" – 1500 Lbs

S018309	Jockey Wheel 8" Swing Up Premium Series
S018310	Jockey Wheel 10" Swing Up Premium Series
S018919	Jockey Wheel 8" Clamp Top Wind (Closed Length - 540mm)
S018920	Jockey Wheel 8" Clamp Top Wind (Closed Length - 730mm)
S018921	Jockey Wheel 8" Clamp Side Wind (Closed Length - 770mm)



Jockey Wheel Spares

S018323	Spare Tyre Jockey 6"
S018324	Spare Tyre Jockey 8"
S018325	Spare Tyre Jockey 10"



TRAILER DRAWBAR



Product Make	Product Category	Product Name	Part Number	CTA Number	Approval Holder
SIR Trailer Parts	Trailer Drawbar	To suit 750 Kg Trailer, 1.5m max from trailer front	TS085SN75-15-MA	TS085SNxx-xx-MA	SIR Australia Pty Ltd
SIR Trailer Parts	Trailer Drawbar	To suit 750 Kg Trailer, 2m max from trailer front	TS085SN75-20-MA	TS085SNxx-xx-MA	SIR Australia Pty Ltd
SIR Trailer Parts	Trailer Drawbar	To suit 1.4 Ton Trailer, 1.5m max from trailer front	TS085SN14-15-MA	TS085SNxx-xx-MA	SIR Australia Pty Ltd
SIR Trailer Parts	Trailer Drawbar	To suit 1.4 Ton Trailer, 2m max from trailer front	TS085SN14-20-MA	TS085SNxx-xx-MA	SIR Australia Pty Ltd
SIR Trailer Parts	Trailer Drawbar	To suit 1.6 Ton Trailer, 2m max from trailer front	TS085SN16-20-MA	TS085SNxx-xx-MA	SIR Australia Pty Ltd
SIR Trailer Parts	Trailer Drawbar	To suit 2 Ton Trailer, 1.5m max from trailer front	TS085SN20-15-MA	TS085SNxx-xx-MA	SIR Australia Pty Ltd
SIR Trailer Parts	Trailer Drawbar	To suit 2 Ton Trailer, 2.5m max from trailer front	TS085SN20-25-MA	TS085SNxx-xx-MA	SIR Australia Pty Ltd
SIR Trailer Parts	Trailer Drawbar	To suit 2.8 Ton Trailer, 1.5m max from trailer front	TS085SN28-15-MA	TS085SNxx-xx-MA	SIR Australia Pty Ltd
SIR Trailer Parts	Trailer Drawbar	To suit 2.8 Ton Trailer, 2.5m max from trailer front	TS085SN28-25-MA	TS085SNxx-xx-MA	SIR Australia Pty Ltd
SIR Trailer Parts	Trailer Drawbar	To suit 3.5 Ton Trailer, 1.5m max from trailer front	TS085SN35-15-MA	TS085SNxx-xx-MA	SIR Australia Pty Ltd
SIR Trailer Parts	Trailer Drawbar	To suit 3.5 Ton Trailer, 2.5m max from trailer front	TS085SN35-25-MA	TS085SNxx-xx-MA	SIR Australia Pty Ltd



SIR Australia PTY LTD

📍 32 Colbert Road, Campbellfield, Victoria (Australia) 3061

📞 +61 420 648 565, +61 410 441 062

✉️ sales@sirtrailerparts.com 🖥️ www.sirtrailerparts.com



Scan QR Code to Download Catalog